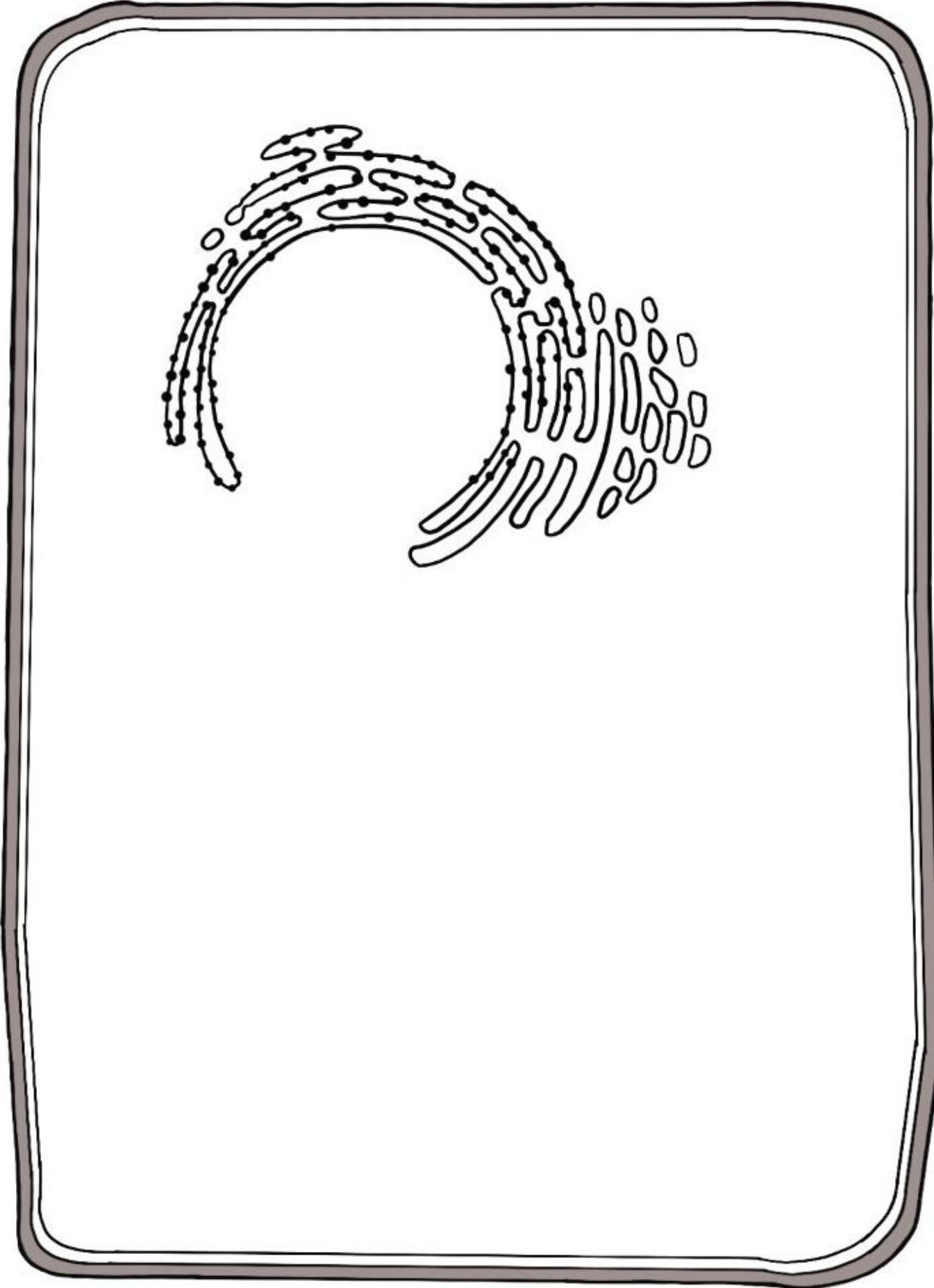
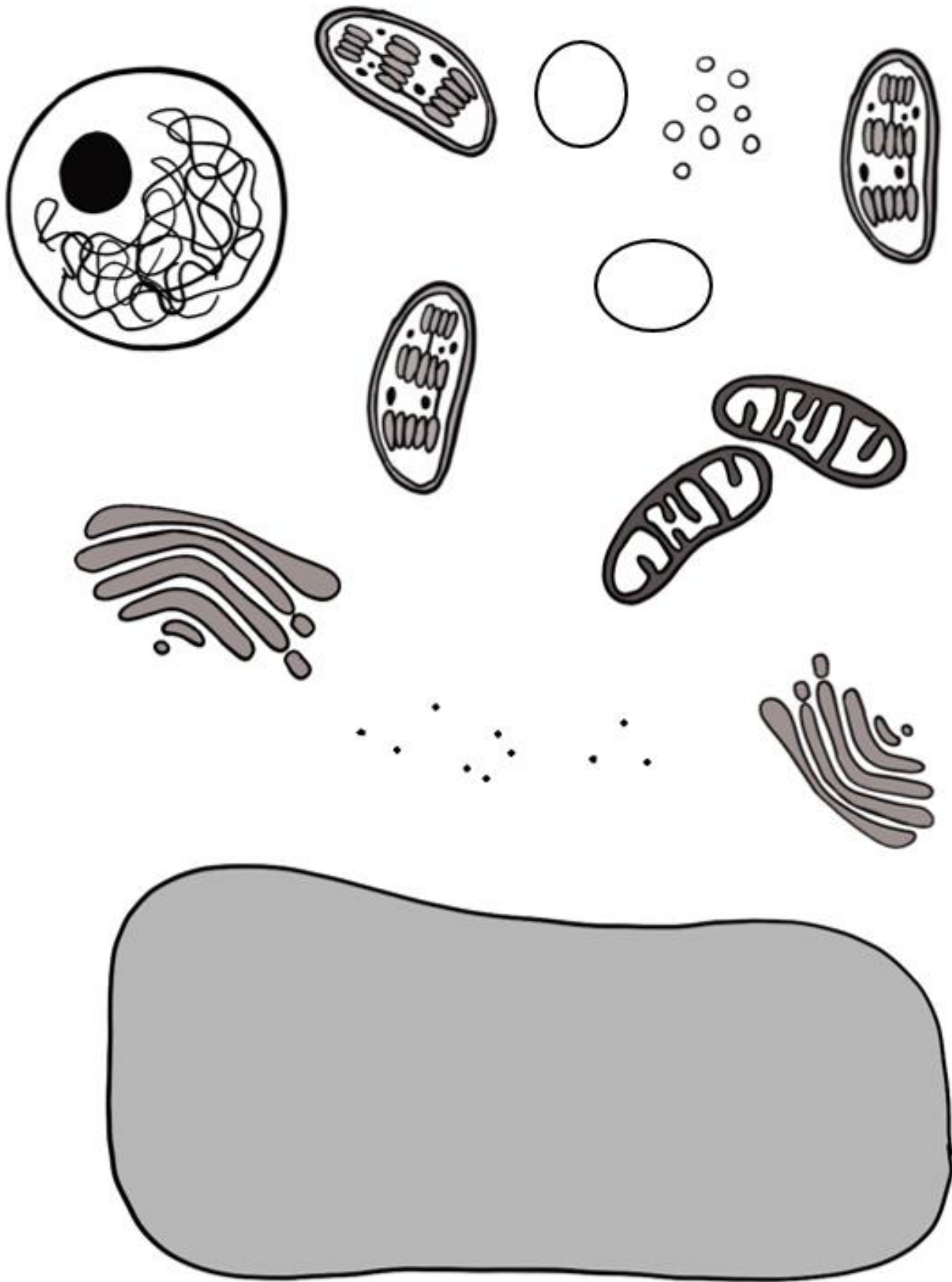


Plant Cell



Cut out these organelles and glue them into the plant cell. Label everything when you are done!



Organelles to label in your completed plant cell:

Plant cell organelles that are NOT found in animal cells:

- Cell wall
- Chloroplast
- Central vacuole

Organelles found in both plant and animal cells:

- Mitochondria
- Nucleus
- Endoplasmic reticulum
- Ribosomes
- Golgi body
- Cell membrane
- Cytoplasm
- Vesicles
- Lysosomes

You should have labelled a total of 12 different organelles and cell structures. 😊